



TRUVETA

MAR 2020

MAR



2020



Donald J. Trump ✓

54K Tweets

↻ Donald J. Trump Retweeted



Biobiobiobio @biobiobiobior • Jul 25



● REMINDER - July 25, 2020:
62 studies confirm the effectiveness of hydroxychloroquine. Deafening silence of the Mainstream Medias, unacceptable mediatic lockdown. [#Hydroxychloroquine](#)



World Health Organization



MEDICAL NEWS TODAY

WHO 'strongly' against hydroxychloroquine use for COVID-19 prevention





Rod Hochman, M.D.
Providence



Michael Slubowski
Trinity Health



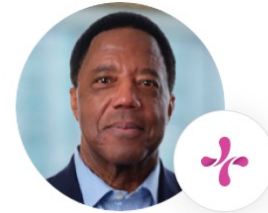
Saum Sutaria, M.D.
Tenet Health



Jim Skogsbergh
Advocate Aurora Health



Michael Dowling
Northwell Health



Lloyd Dean
CommonSpirit



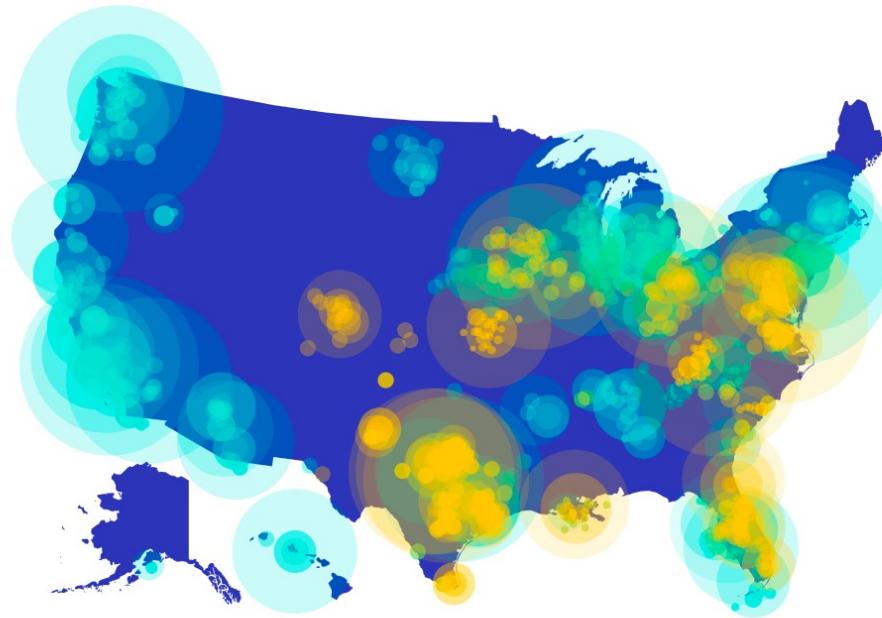
Ray Vara
Hawai'i Pacific Health



Wright Lassiter III
Henry Ford Health



Terry Shaw
Advent Health



Michael Mayo
Baptist Health



John M. Starcher, Jr., ESQ.
Bon Secours Mercy Health



David L. Callender, M.D.
Memorial Hermann



Carl S. Armato
Novant Health



Howard P. Kern
Sentara



Barclay E. Berdan
Texas Health



Peter McCanna
Baylor Scott & White Health



Kenneth Samet
MedStar Health



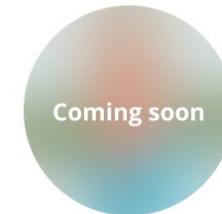
Warner Thomas
Ochsner Health



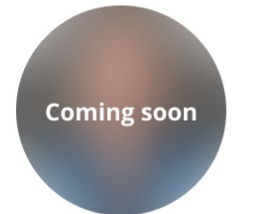
Melinda L. Estes, M.D.
Saint Lukes



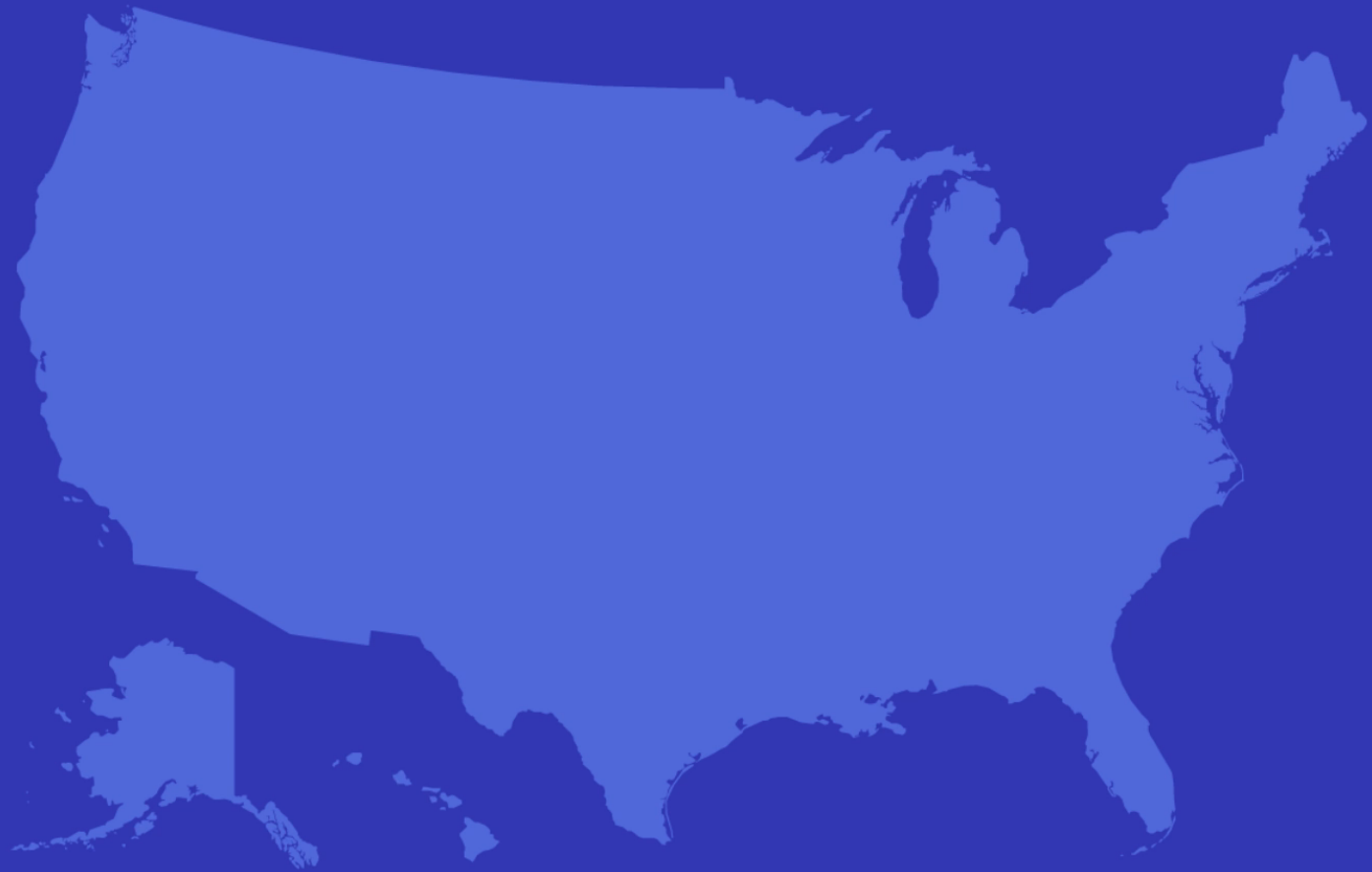
Clay Holderman
UnityPoint Health



Coming soon



Coming soon



TRUVETA

Saving Lives with Data

More than **16%**
of clinical care

Updated
daily

Linked patient
journeys



Claims data

- The lab test bill,
but not the lab test result

Clinical data

- All diagnoses
(not just reimbursable billing codes)
- Lab test results
- Clinical notes
- Images
- Genomics

SDOH data

- Housing instability
- Transportation insecurity
- Financial insecurity
- Education
- Stress
- Social connection

Linked for the complete patient journey

16%

US clinical care

50%

of commercial
insurance claims

40%

of Medicare &
Medicaid claims

100%

SDOH data

An illustration of an iceberg floating in dark blue water. The visible tip of the iceberg is composed of several smaller peaks, each representing a different data source. The largest peak on the left is labeled '16% US clinical care'. The second peak is labeled '50% of commercial insurance claims'. The third peak is labeled '40% of Medicare & Medicaid claims'. The fourth peak is labeled '100% SDOH data'. The submerged part of the iceberg is much larger and is labeled 'Patient data is linked with a high accuracy LexisNexis token'.

Patient data is linked with a high
accuracy LexisNexis token

Linked for the complete patient journey

16%

US clinical care

50%

of commercial
insurance claims

40%

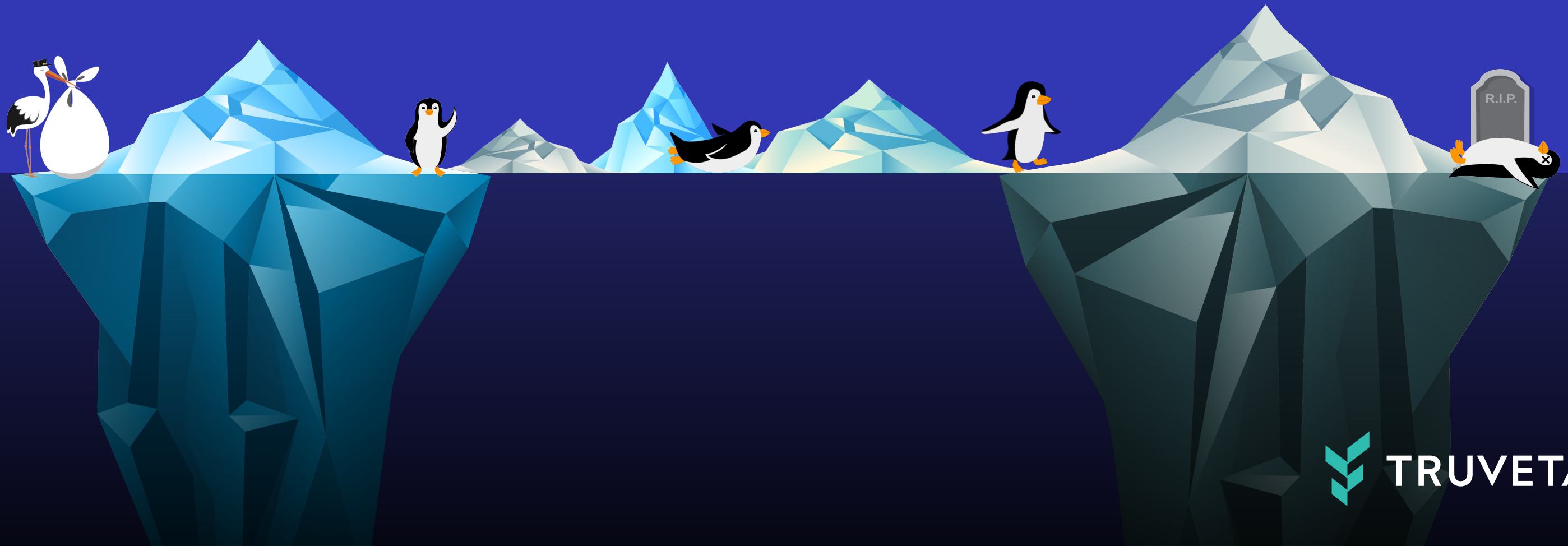
of Medicare &
Medicaid claims

100%

US SDOH data

100%

US Mortality data





🔥 Kareem Carr 🔥

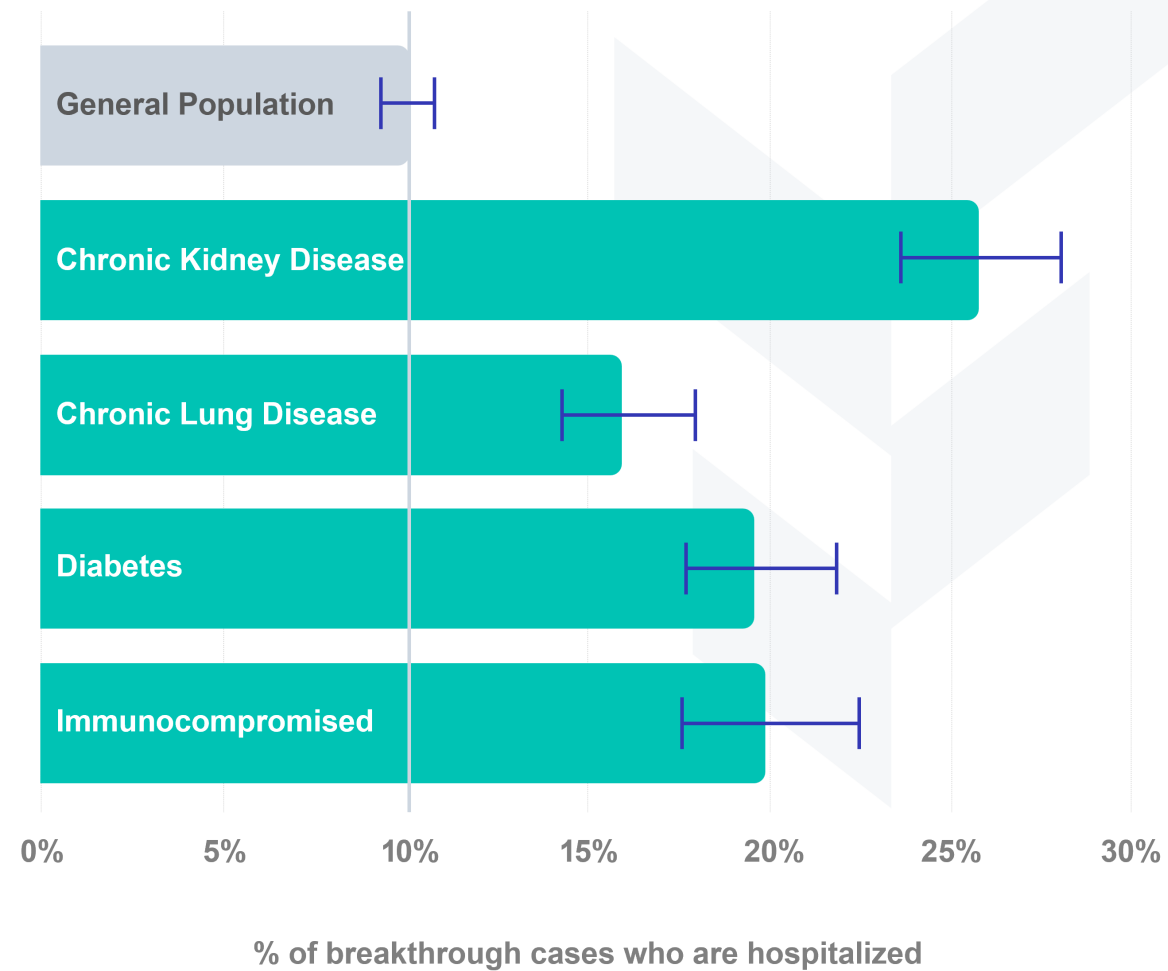
@kareem_carr

the first time
you work with
real data

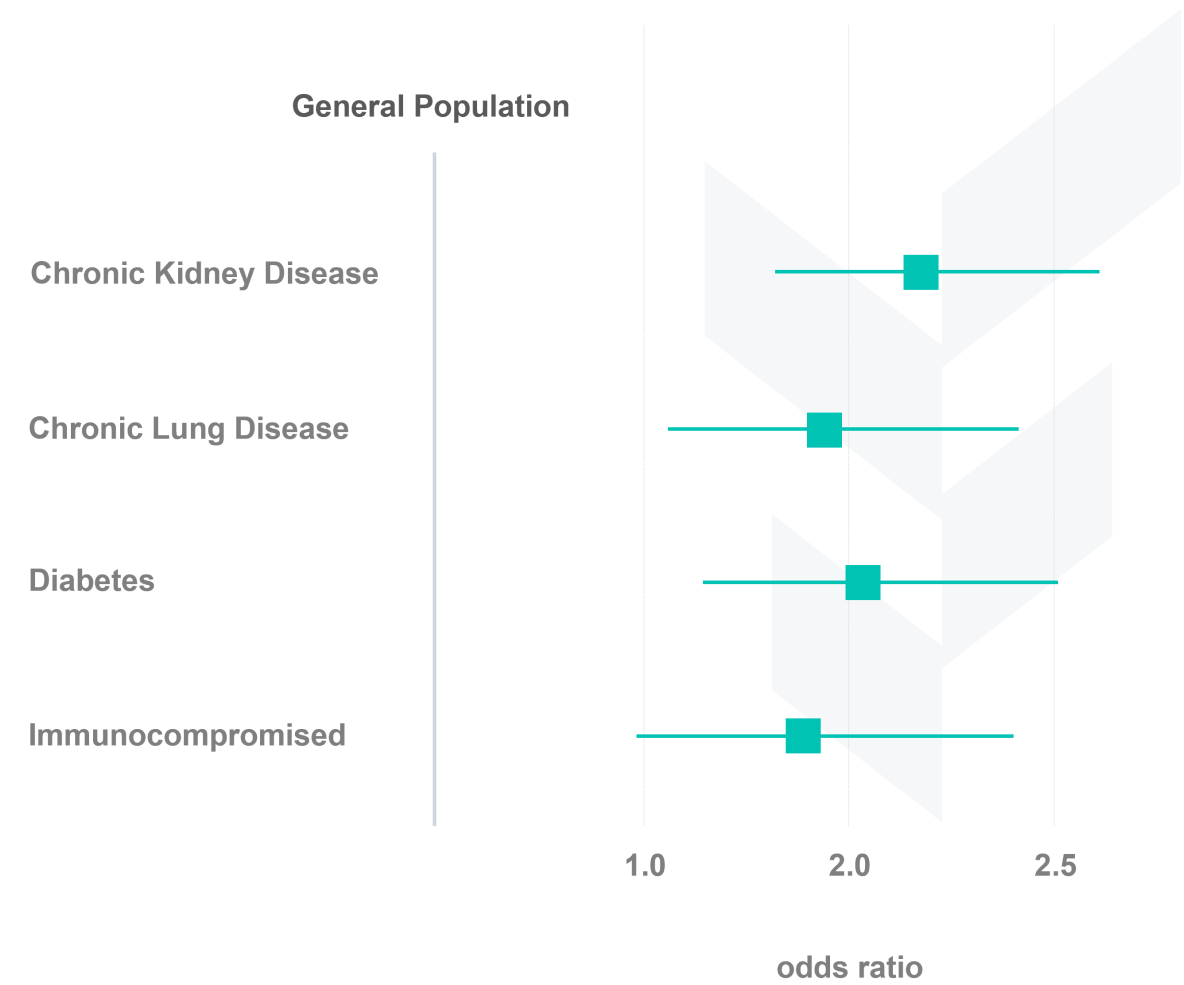


DEMO

Percent hospitalization following breakthrough infection among vaccinated comorbidity

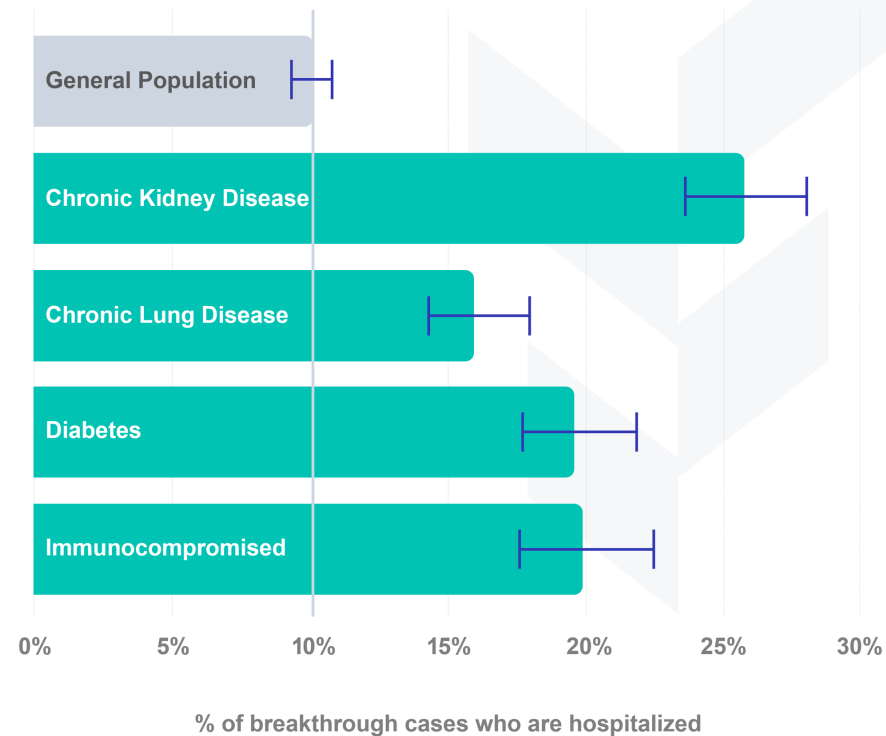


Odds ratio of hospitalization following breakthrough infection among vaccinated by comorbidity





Percent hospitalization following breakthrough infection among vaccinated comorbidity



Centers for Disease Control and Prevention
CDC 24/7: Saving Lives, Protecting People™

Search

[Advanced Search](#)

Morbidity and Mortality Weekly Report (MMWR)

CDC



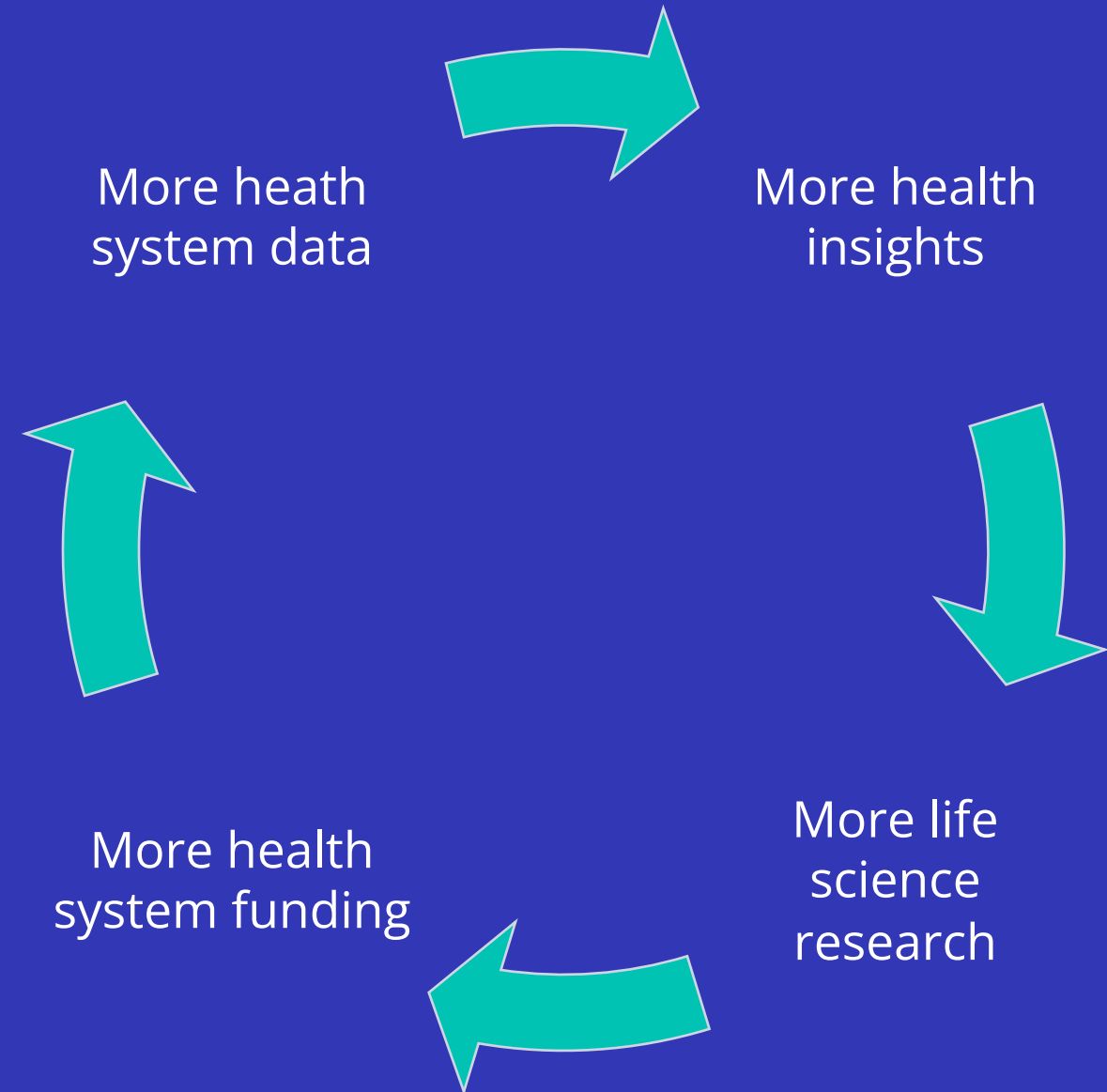
Risk Factors for Severe COVID-19 Outcomes Among Persons Aged ≥ 18 Years Who Completed a Primary COVID-19 Vaccination Series - 465 Health Care Facilities, United States, December 2020–October 2021

Weekly / January 7, 2022 / 71(1);19–25

Christina Yek, MD^{1,2,*}; Sarah Warner, MPH^{1,*}; Jennifer L. Wiltz, MD³; Junfeng Sun, PhD¹; Stacey Adjei, MPH³; Alex Mancera, MS¹; Benjamin J. Silk, PhD³; Adi V. Gundlapalli, MD, PhD³; Aaron M. Harris, MD³; Tegan K. Boehmer, PhD³; Sameer S. Kadri, MD¹ ([View author affiliations](#))

November 9, 2021 — 2 months later —> January 7, 2022

New revenue stream to pursue mission



First signed Life Science customers

TOP 10 PHARMA COMPANY

TOP 10 MED DEVICE COMPANY

Why Truveta?	Extremely limited access to timely COVID clinical data	No ability to learn about the real-world safety & effectiveness of its devices given the complete lack of data linking device-specific records to longitudinal clinical records
Disease subscriptions	<ul style="list-style-type: none">COVID-19	<ul style="list-style-type: none">Liver cancerPeripheral artery diseaseVenous thromboembolic disease
Early research priorities	<ul style="list-style-type: none">Safety & effectiveness monitoring of vaccinesPost-approval reporting for vaccine	<ul style="list-style-type: none">Label expansion for devices of interestHealth equity research for diseases of interest
Terms	<ul style="list-style-type: none">3-year term\$10M subscription fee per year	<ul style="list-style-type: none">3-year term\$2M subscription fee per year



1990s Today

