

Sutter Health Mental Health Services

April 24, 2020

John Boyd, PsyD, FACHE
Chief Executive Officer

Larry Marx, M.D.
Director, Integrated Care

Ernell De Vera, RN, MBA
Chief Nurse Executive

Rob Oldham, M.D., M.S.H.A.
Medical Director, Acute Psychiatric Services



Sutter Mental Health & Addiction Care Centers

Inpatient Facilities including Hospital Based Outpatient Services.

Serving California, Oregon, Nevada, Hawaii, & Pacific Rim



Mental Health Inpatient & Addiction Care Units

- California Pacific Medical Center (16 beds)
- Mills Peninsula (64 beds)
- Alta Bates – Herrick Hospital (65 beds)
- Merritt Peralta Institute (24 beds)



Freestanding Facilities

- Sutter Center for Psychiatry - Sacramento (71 beds)
- Kahi Mohala - Oahu (88 beds)



Outpatient Care Centers (Ambulatory)

- California Pacific Medical Center
- Palo Alto Medical Foundation – Palo Alto & Santa Cruz
- Sutter Gould Medical Foundation - Modesto

Total of 328 Licensed Inpatient Beds




Sutter Mental Health Services Vision

Sutter Health will become the national leader in establishing universal access to affordable, innovative mental health and addiction care by leveraging our comprehensive integrated delivery system with technology and strategic public/private partnerships that is supported by sound public mental health policy, advocacy, education, and training.

Sutter Mental Health Services: 2019 - 2021 Priorities

The following priority areas will support Mental Health Services to deliver care that is
Safe, Personal, Accessible and Affordable

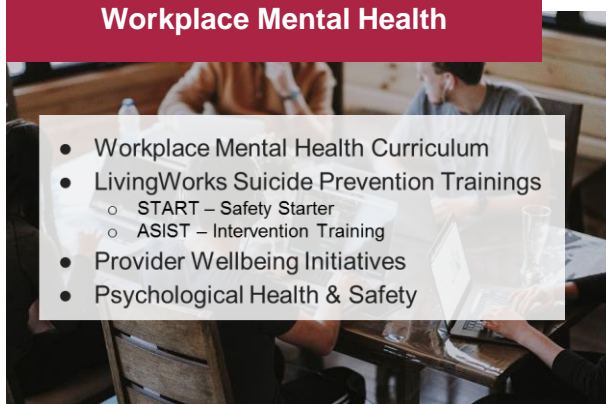
Prevention & Early Intervention

- 
- Universal Screening
 - Strengthen Community Programs (Public & Private)
 - Health Equity & Population Health Support


Access to Mental Health Care

- 
- Ambulatory Mental Health Strategy
 - Telepsychiatry Growth
 - Addiction Services Strategy
 - Quartet Expansion
 - Child Psychiatry Services Strategy
 - Centralized Call Center
 - Virtual Care Pathways


Workplace Mental Health

- 
- Workplace Mental Health Curriculum
 - LivingWorks Suicide Prevention Trainings
 - START – Safety Starter
 - ASIST – Intervention Training
 - Provider Wellbeing Initiatives
 - Psychological Health & Safety

Development Opportunities

- 
- Foundational Partners Maturation
 - Workforce Training
 - Human-Centered Mental Health Care Design
 - Philanthropic Engagement
 - Clinical Program Strengthening
 - Build Community Capacity

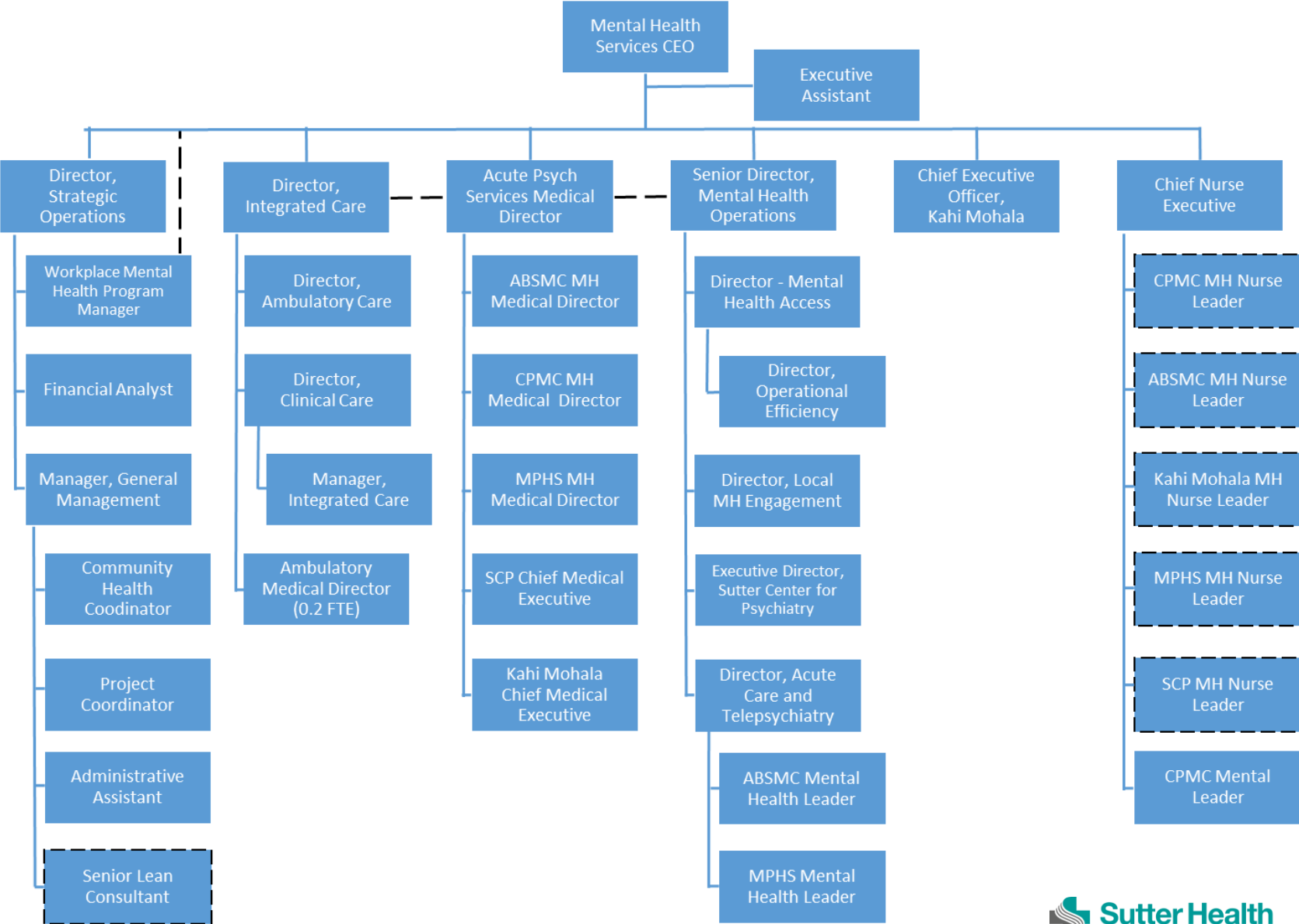
Operational Rigor

- 
- Performance Management System/Dashboard
 - Quality & Patient Safety
 - Regulatory Compliance & Survey Readiness
 - Acute Efficiencies
 - Data Management
 - LEAN Operating System
 - Acute Hospital Throughput

Advocacy

- 
- Locally: City & County Engagement
 - Statewide: Policy & Legislation
 - Nationally: Industry Leadership
 - Internationally: Best Practice Modeling

Current Mental Health Services Structure





COVID-19 Response

Challenges and Learnings

Lack of guidance in behavioral health setting

- Screening and admission criteria
- Care of PUI/COVID+ patients in the inpatient units
- Pandemic plan specific to BH settings

Limitations in ability to fully support ED throughput

- 5150 Holds/Tele-psychiatry
- County referral process to contracted facilities
- Discharge planning



COVID-19 Response

Where we are today

Development of interim guidance

Continued partnership

- Sutter Health system
- Affiliate leaders/key stakeholders
- County, community and state leaders

Mental illness: 'next wave' of COVID-19 pandemic

Situation is fluid and need to be flexible and adapt



Discussion

Everyone Has a Role in
Transforming the Narrative



John Boyd, PsyD, FACHE

Phone: 916 208 0267

BoydJ@sutterhealth.org



@JohnBoydPsyD

Larry Marx, M.D.

MarxIS@sutterhealth.org

Ernell De Vera, RN, MBA

AntoniET@sutterhealth.org

Rob Oldham, M.D., M.S.H.A.

OldhamR@sutterhealth.org