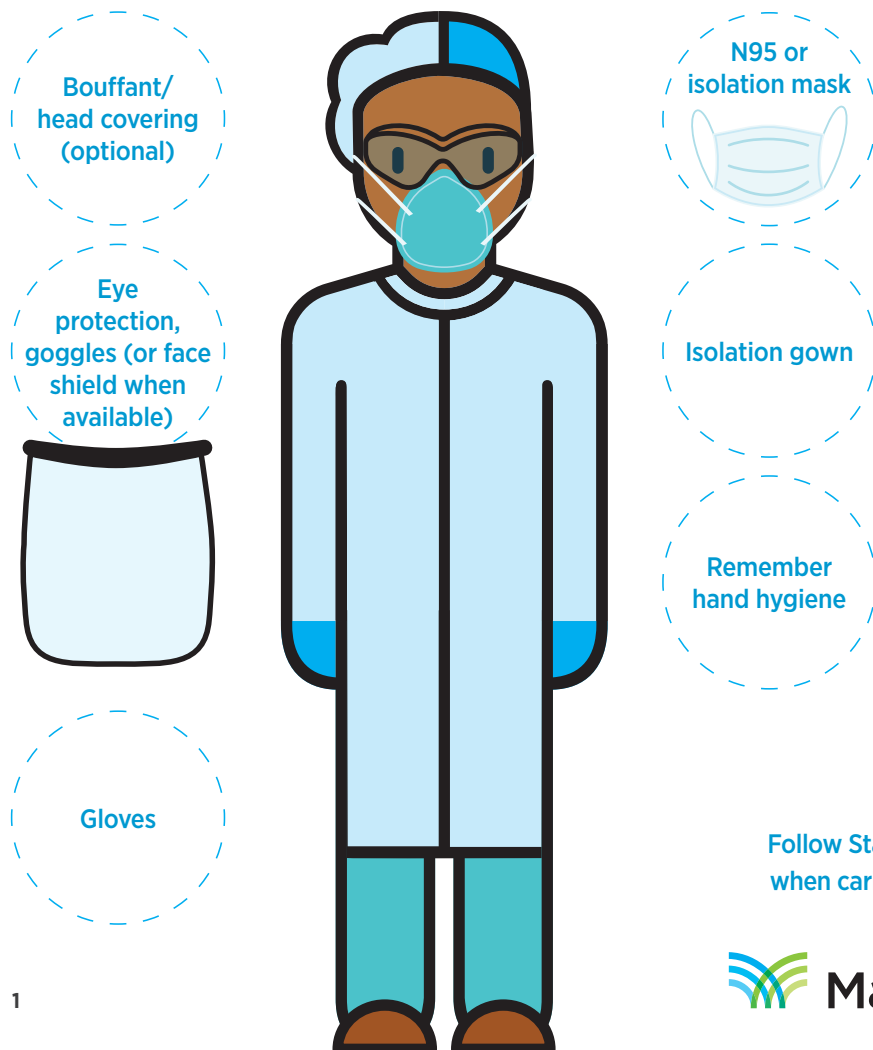


## PPE requirements when caring for COVID-positive or rule-out patients

**Location(s):** Emergency department, Intensive Care Unit, COVID-cohorted units; Also required in other units/departments when caring for a COVID positive or rule-out patients (e.g., Labor & Delivery, Mother/Baby, Medical/Surgical/Telemetry units, Diagnostic Procedure departments)

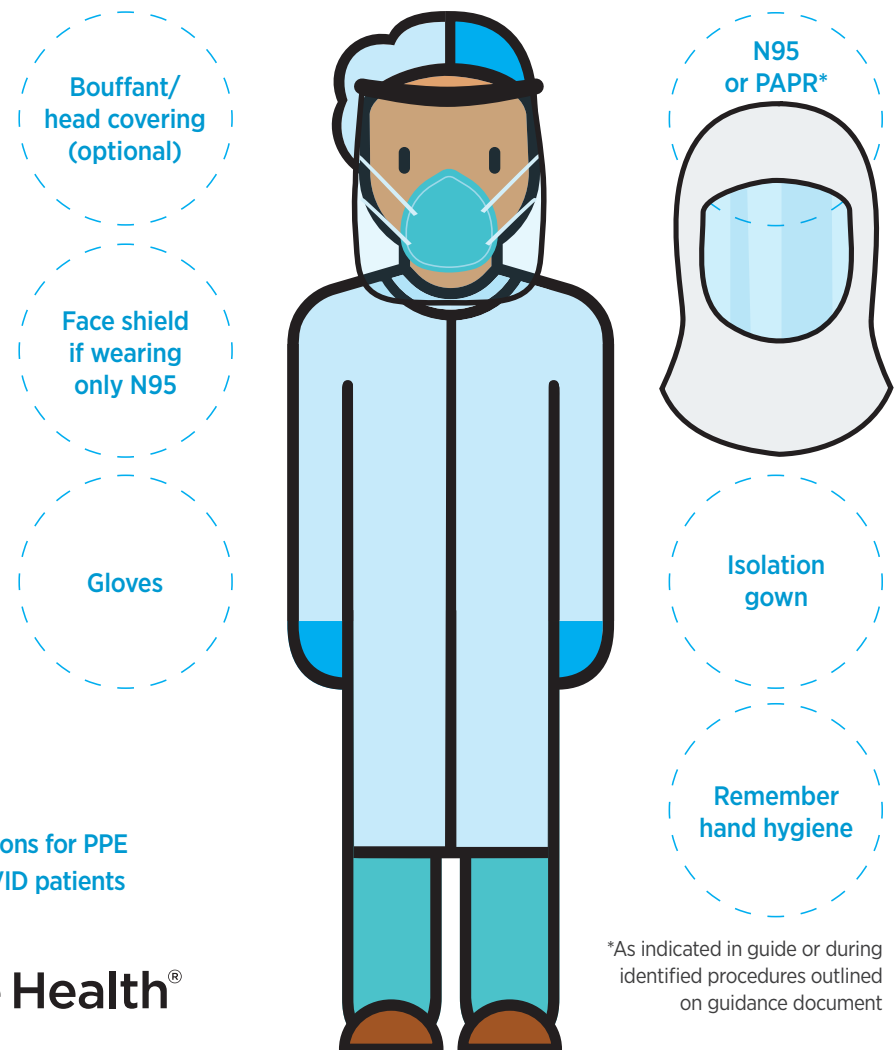
**Staff:** All staff providing direct patient care for an extended period of time (20 minutes) or entering the room of a COVID positive or rule-out patient, including environmental services staff



## PPE requirements for Aerosol-Generating Procedures (AGP) for COVID-positive or rule-out patients

**Location(s):** Emergency department, Intensive Care Unit, Operating Rooms, Cath Lab, Endoscopy/Bronchoscopy, Interventional Radiology and Cardiovascular Intervention, Inpatient units COVID-cohorted units; Also required in other units/departments when caring for a COVID positive or rule-out patient (e.g., Labor & Delivery, Mother/Baby, Diagnostic Procedures)

**Staff:** All staff involved in aerosol-generating procedures (e.g., intubation, extubation, sputum induction, open suctioning of airways, nebulizer treatments, heated high flow nasal cannula)

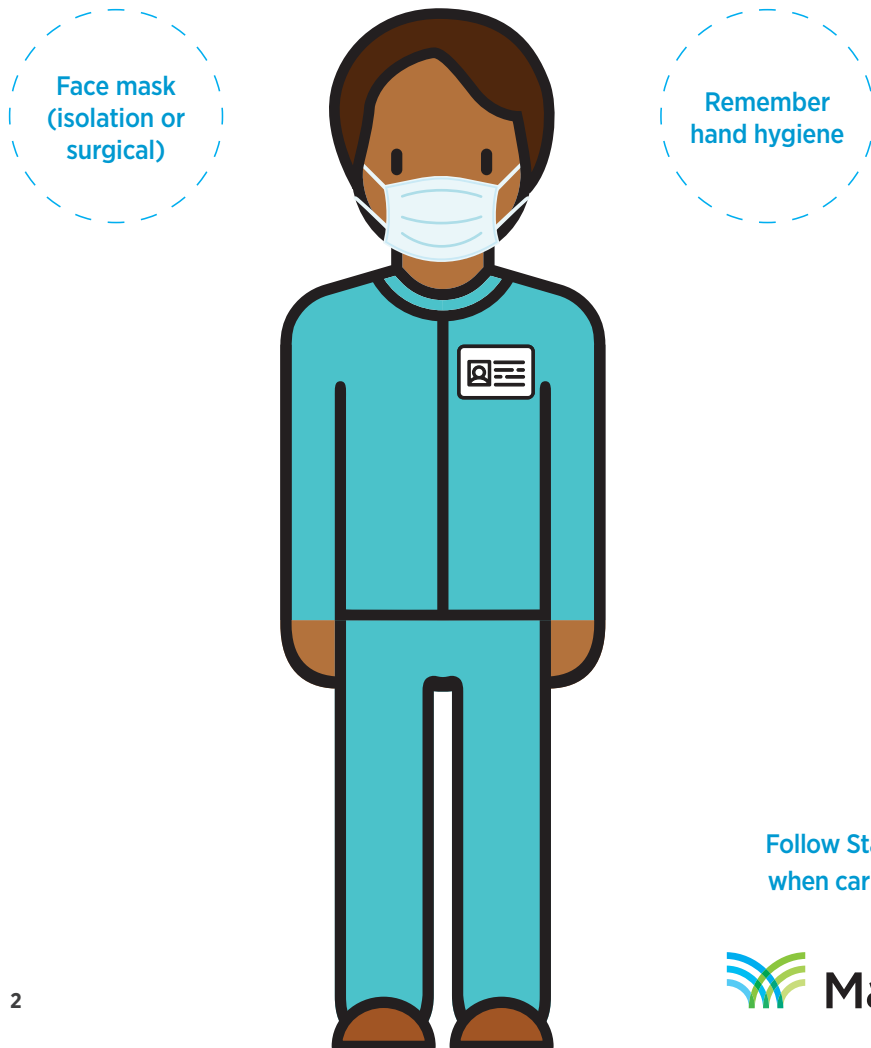


Follow Standard Precautions for PPE  
when caring for non-COVID patients

## PPE requirements when caring for non-COVID patients

**Location(s):** All Inpatient units, diagnostic testing/procedural departments, patient registration, Food Services, Pharmacy

**Staff:** All staff involved in care of non COVID positive patients and staff in areas where social distancing is not possible

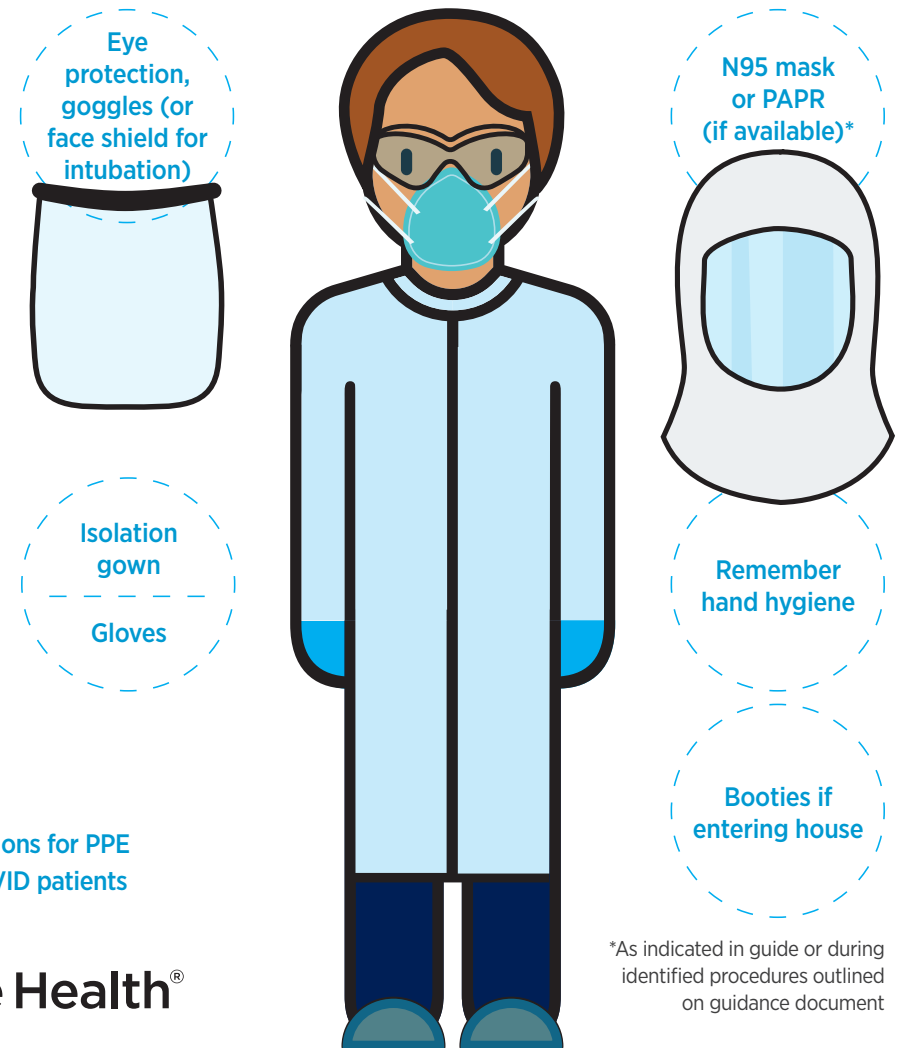


Follow Standard Precautions for PPE when caring for non-COVID patients

## PPE requirements for COVID-positive or rule out patients

**Location(s):** EMS field personnel caring for all patients

**Staff:** All EMTs and paramedics in the field on emergency and non-emergency calls

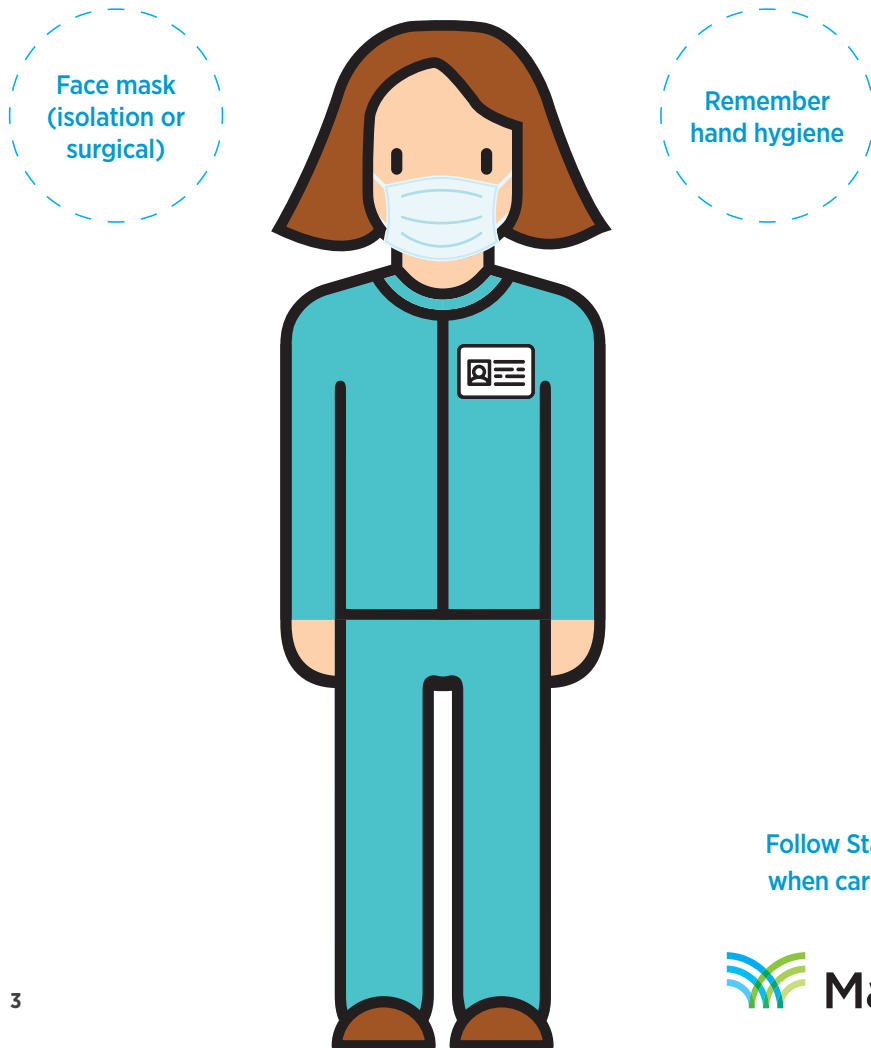


\*As indicated in guide or during identified procedures outlined on guidance document

## PPE requirements for physician offices and ambulatory care facilities

**Location(s):** Main Line HealthCare physician offices and ambulatory care facilities (except Urgent Cares)

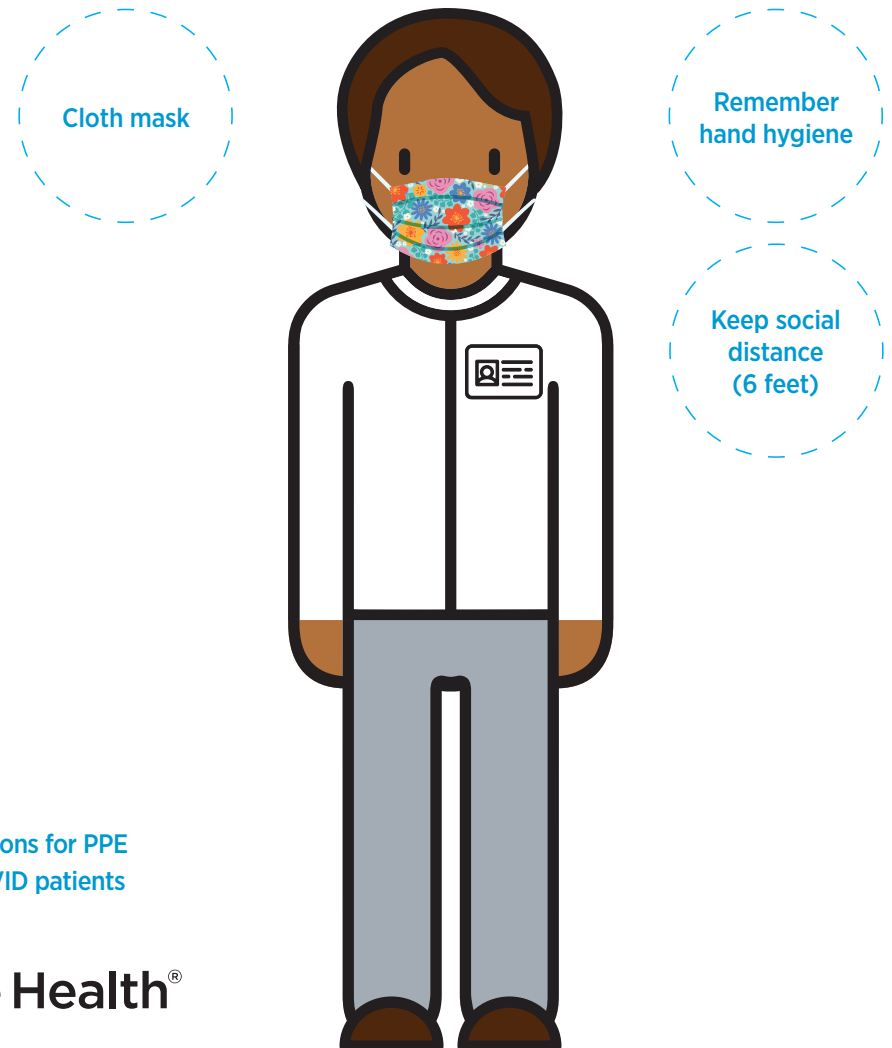
**Staff:** All clinical and non-clinical staff in MLHC physician offices and ambulatory care facilities



## PPE requirements for administrative areas

**Location(s):** Berwyn, Ellis Preserve, Radnor, administrative buildings and administrative areas in hospitals

**Staff:** All staff in these locations

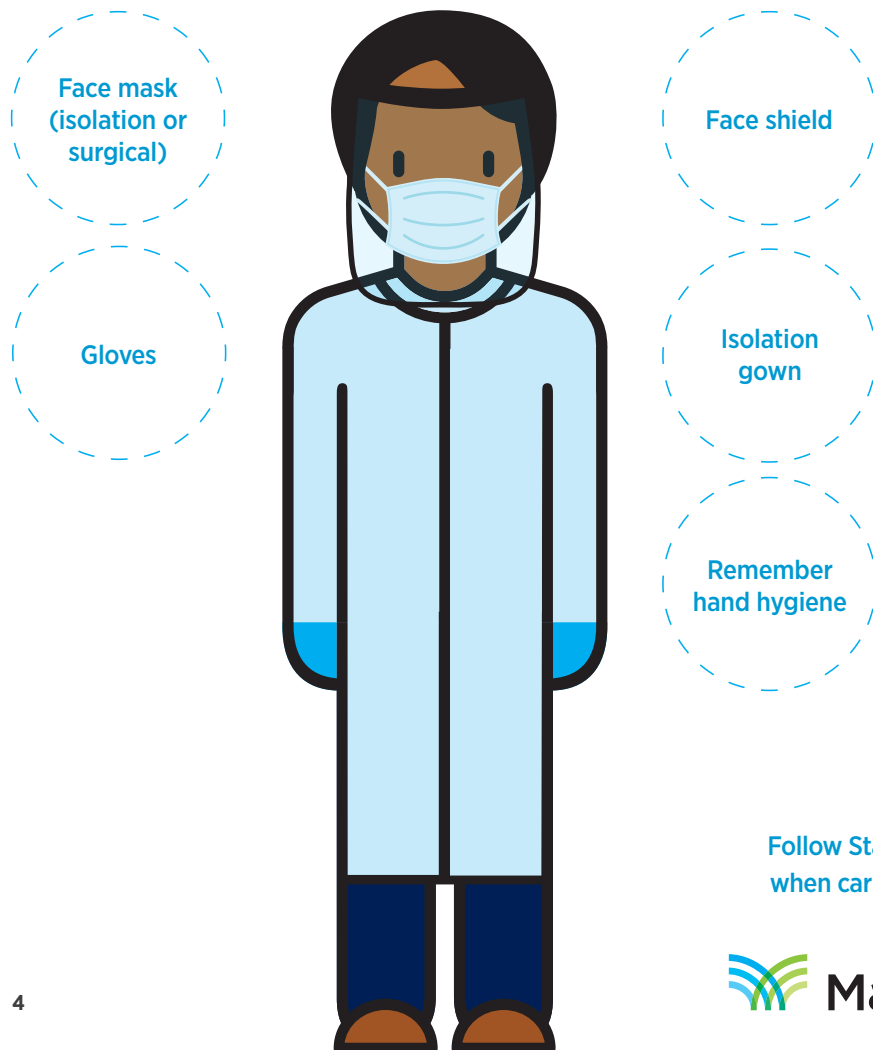


Follow Standard Precautions for PPE  
when caring for non-COVID patients

## PPE requirements for CODE GREEN-19

**Location(s):** Any unit where our Public Safety Officers respond to CODE GREEN-19

**Staff:** Public Safety Officers



Follow Standard Precautions for PPE  
when caring for non-COVID patients