



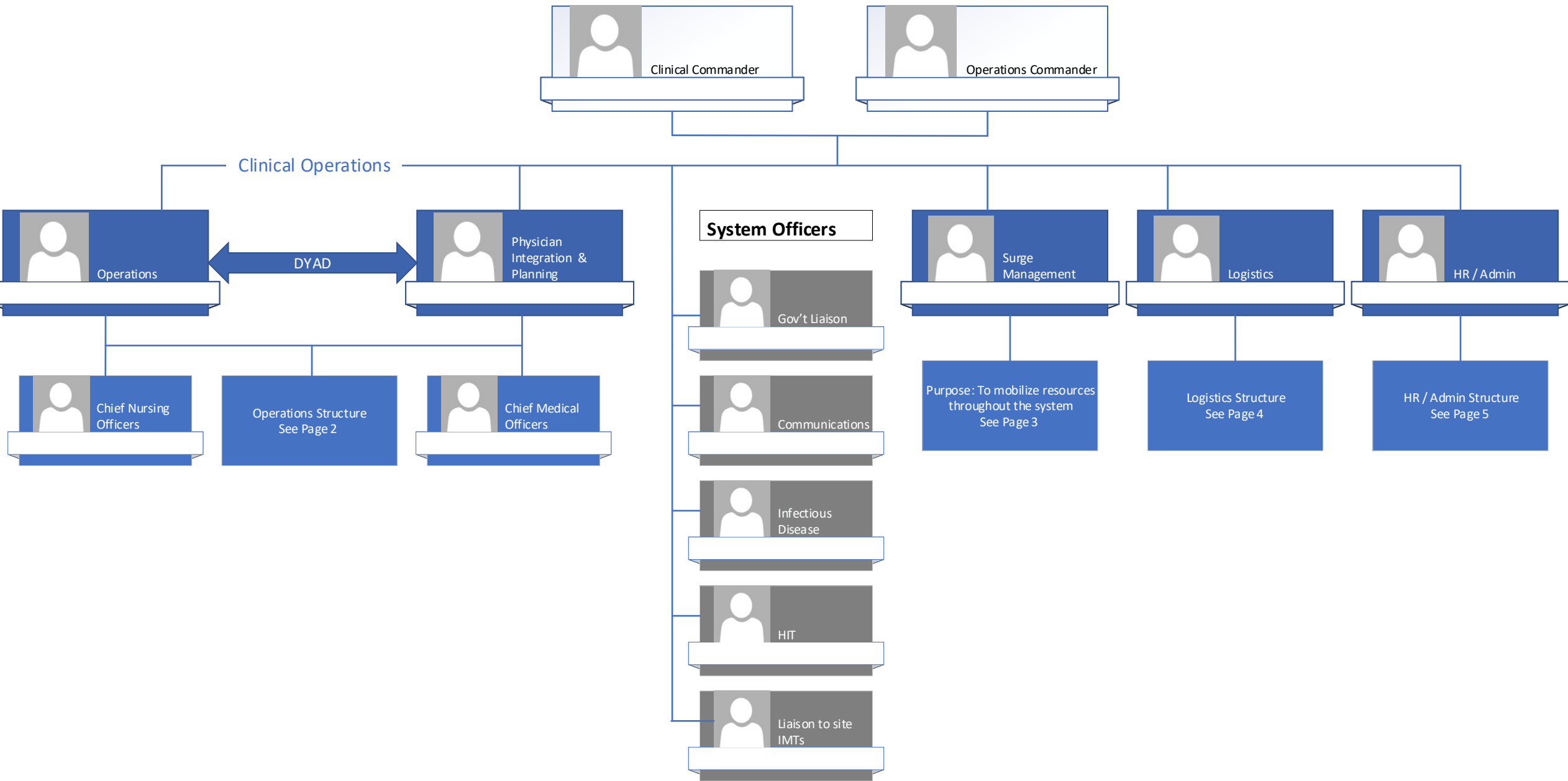
COVID-19 Incident Command Structure



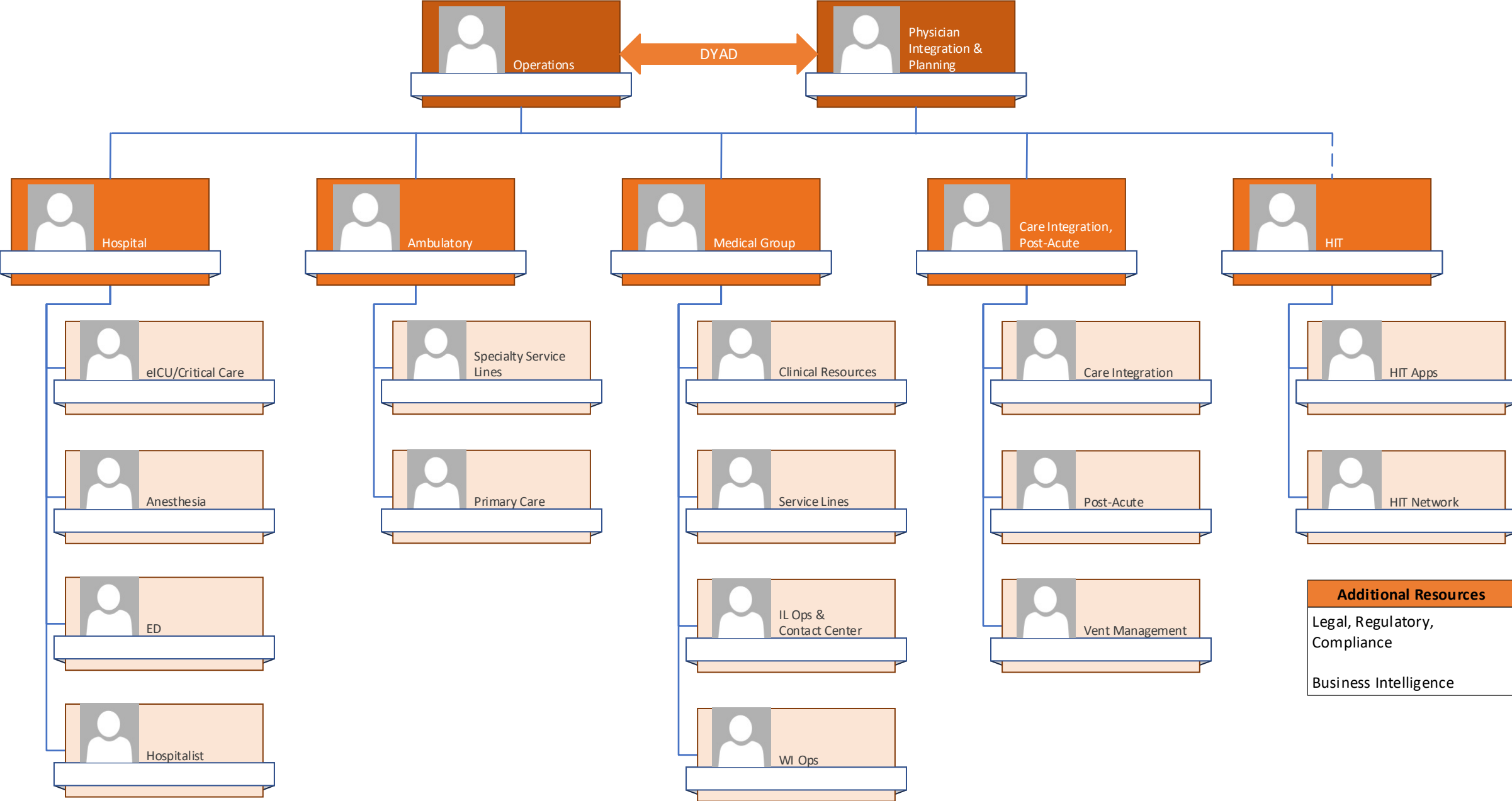
April 6, 2020 | COVID-19 System Incident Commanders



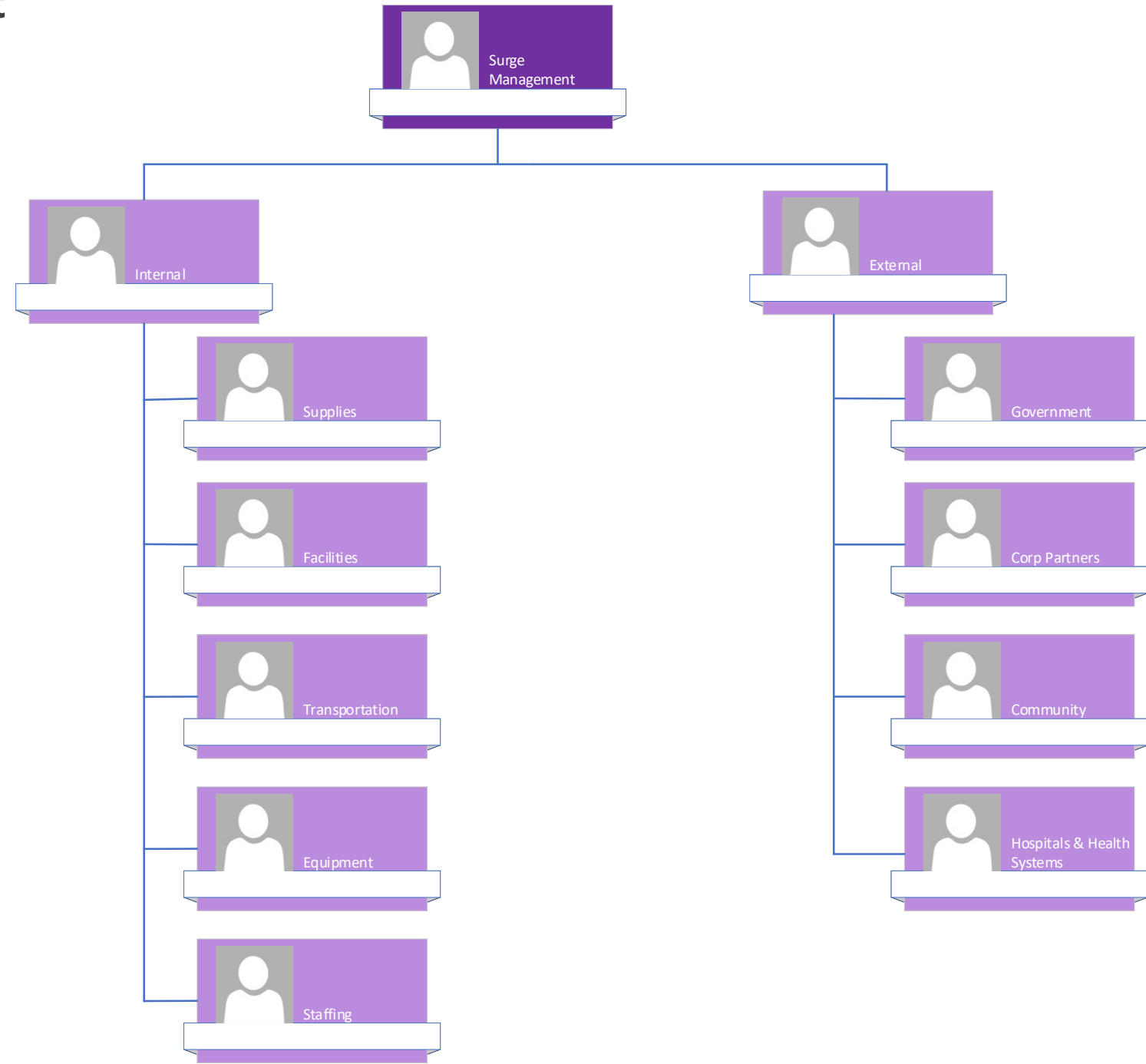
Incident Command Org Structure



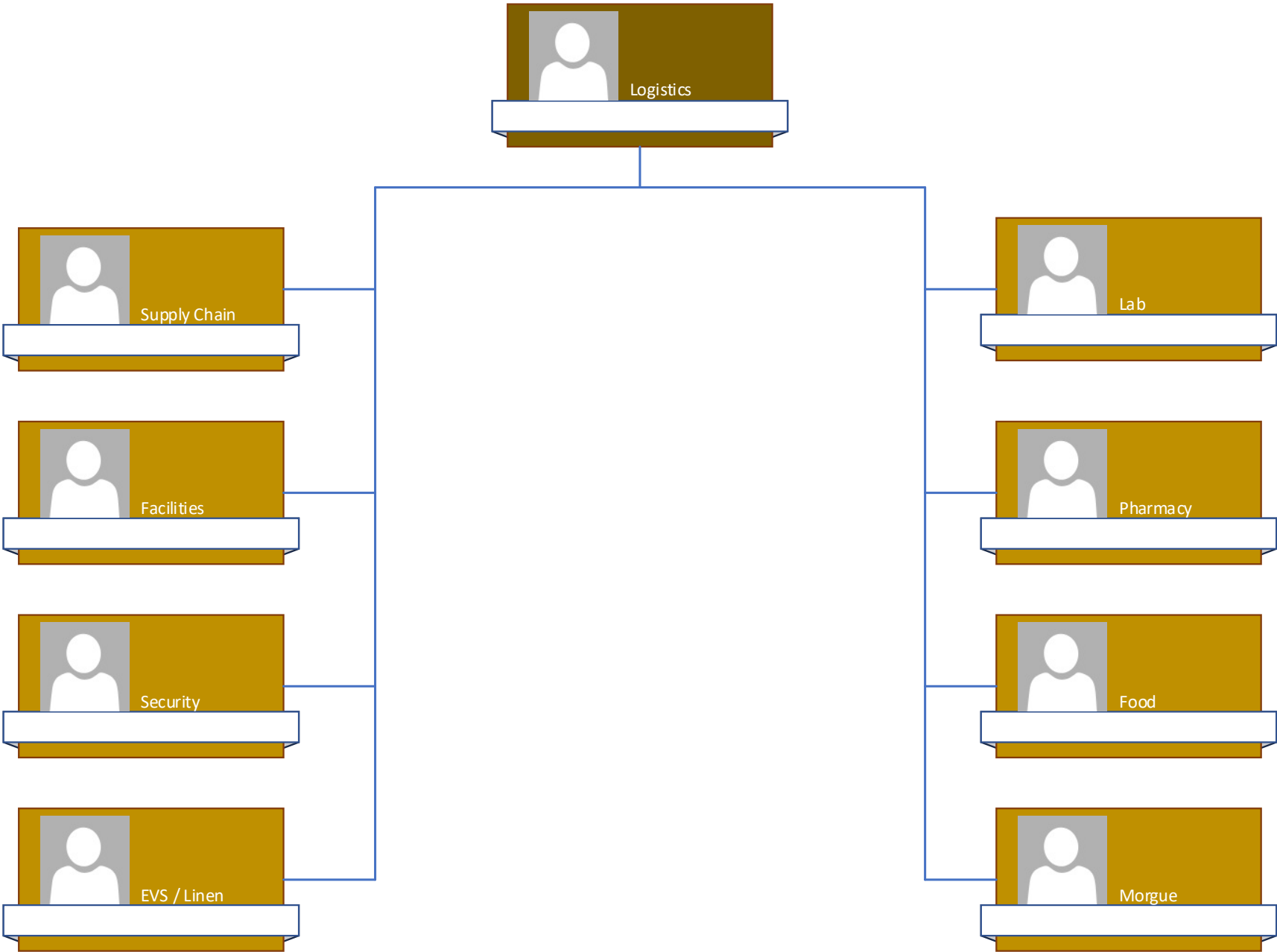
Operations - Physician Integration & Planning



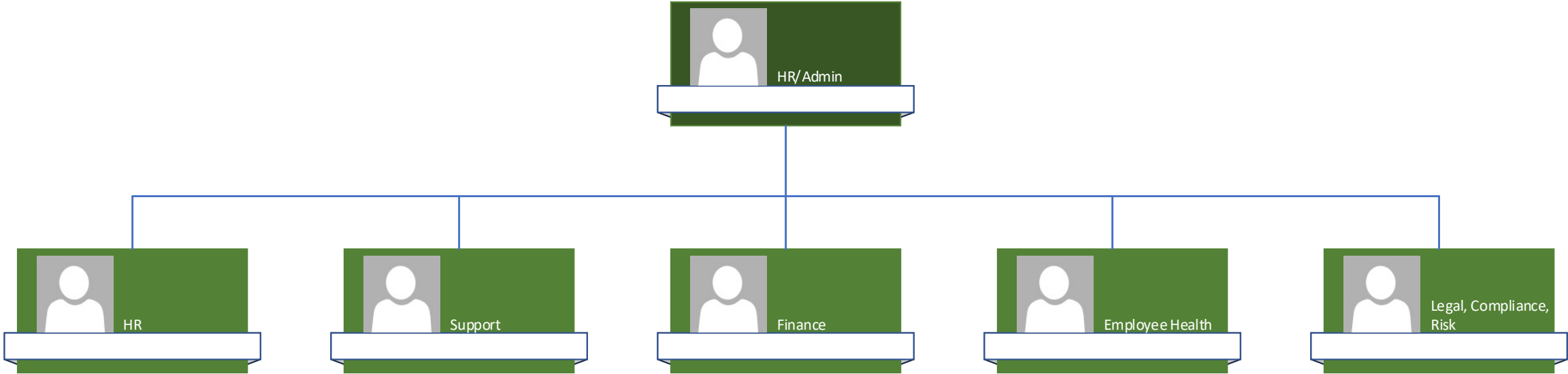
Surge Management



Logistics



HR/Admin



5 Levels of Escalation

| | | |
|----------------|---|--|
| Level 5 | Temporary/Pop Up Acute sites created in non-health care locations | In partnership with government – non-health care sites such as hotels and retail converted to patient care. |
| Level 4 | Targeted ambulatory sites repurposed for non-COVID-19 care | Targeted services moved to key ambulatory sites to help stem spread and free capacity for COVID-19 patients. |
| Level 3 | ICUs expanded into other units such as PACU | ICUs expanded to multiple room occupancy and expanded into other units appropriately equipped within our acute sites. Expanded postponing of procedures/visits. |
| Level 2 | COVID-19 Units established at all acute sites | Every acute site has a designated unit for all COVID-19 patients. Temporary testing sites erected across most acute campuses. 1-800 consumer number launched. Virtual visits extended to 24/7. Targeted elective procedures and well visits postponed. Visitor hours modified. |
| Level 1 | COVID-19 | Incident command in place and all protocols in place. |