

# **COVID-19 Toolkit**

*2019 Novel Coronavirus*

**For MLH Psychiatric Patients**

## **Evaluation and Management of Psychiatric Patients**

### **NOTICE**

Patients who screen positive and require COVID testing cannot be admitted to the BMH Behavioral Health Unit

Patients who are positive for COVID or are awaiting results from COVID testing cannot be admitted to the Behavioral Health Unit

## **Part 1. For Psychiatric Patients who Present to a MLH Emergency Department**

When a psychiatric patient presents to a MLH Emergency Department, the patient will undergo the same Evaluation and Management procedure as defined in the ED COVID-19 Toolkit.

If screening criteria is not met, then the patient will be evaluated, treated, and dispositioned according to established behavioral health guidelines.

If screening criteria is met, then please refer to the section 'Evaluation and Management Details Guide' under the ED COVID-19 Toolkit and follow instructions regarding precautions, notifications, and testing.

Obtain a behavioral health assessment by the ED Crisis Team to determine the recommended level of psychiatric care (e.g. Inpatient Psychiatric, D&A Rehab, Partial, Outpatient).

If the patient requires Inpatient Psychiatric hospitalization and there is clinical concern for COVID in the ED, then the patient should board in the **ED** or be admitted to a **medical unit at the hospital where the patient presented** for continued observation and psychiatric treatment unit until the COVID test result is obtained. Determination of patient location may depend upon the availability of COVID testing and time to get the results. Nursing administration in conjunction with the hospital VPMA may designate a unit or wing to co-locate behavioral health patients within each hospital. A psychiatric consult should be ordered on all psychiatric COVID pending/positive patients admitted to the medical units.

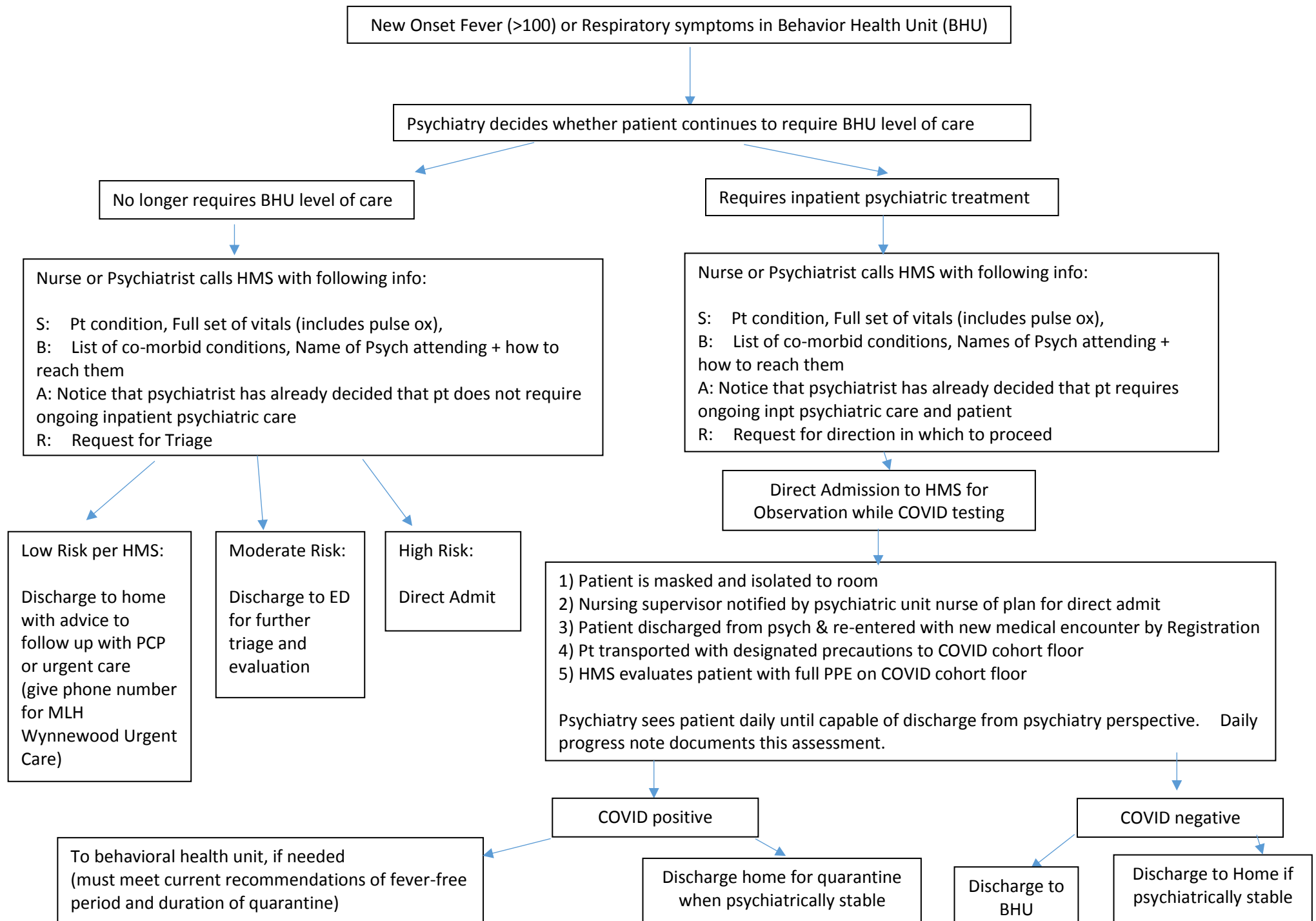
Psychiatry will follow and treat patients daily. If the patient tests negative for COVID, then social work will make a disposition plan, which may be transfer to a psychiatric facility. If the patient tests positive for COVID **and** continues to require an inpatient level of psychiatric care, then the patient should remain on the medical floor until medically cleared for risk of COVID transmission and can be discharged to a psychiatric facility.

Psychiatric treatment will continue on the medical unit while the patient is hospitalized. Telehealth services should be used to conserve PPE and minimize exposure whenever possible. If the patient has staff performing 1:1 observation in the room, then the RN and providers should use telephonic or video communication with the 1:1 and patient to minimize traffic into and out of the room, and to minimize use of PPE whenever clinically appropriate.

## Part 2. For Patients Currently Admitted to the Inpatient Behavioral Health Unit

All patients admitted to the Behavioral Health Unit will have already screened negative for COVID-19 or have been cleared by a physician to participate in a community inpatient psychiatric unit. If a patient develops a new onset fever  $> 100.0$  or other symptoms of respiratory illness such as cough, then the patient should be masked and isolated to room on the psychiatric unit. In the event this should happen, the inpatient psychiatric team will follow the decision-tree (Fig 1.) below for evaluation and management:

**Fig 1. Evaluation and Management Decision-Tree for patients on the Behavioral Health Unit**



## Part 3. Infection Prevention Protocols for the BMH Inpatient Behavioral Health Unit

- Housekeeping has increased unit cleaning schedule by wiping down surfaces at least every 3 hours, between 07:00-23:00.
- Staff will continue to monitor cleanliness and perform extra cleaning with sani-wipes as necessary.
- Staff is educating all patients on effective handwashing techniques.
- Communal water pitchers and snacks were removed from common area. Each patient will have their own water pitcher in their room.
- Patients are advised to sit at least 6 feet apart during meals and groups.
- Staff must wipe down BP cuff and thermometers with a sani-wipe after use on each patient.
- Hand sanitizer now located at each med-pass location. Nurses should apply hand sanitizer to each of their patients during med-pass. Staff should offer a pump of hand sanitizer to patients prior to each meal and whenever necessary.
- When groups are held in the library or art room, there should be no more than 5 patients with the group leader. Wipe tables and chairs with Sani-wipes after each meeting.
- All admissions to the unit from MLH EDs will follow the standard COVID screening procedures as outlined in the ED COVID-19 Toolkit. Nursing staff can contact Dr. Cohen, Dr. Burock, or Mary Koko, if concerns about pending admission.
- All outside referrals will be reviewed by the Transfer Center and screened, in addition to review by psychiatric nursing.
- Vital signs, including temperature, are being monitored TID in all patients.
- The use of weighted blankets is being held until further notice.
- All patients will be placed in a private room until further notice.