



The Institute for Mental Health and Wellness

Amy Compton-Phillips, MD
The Leadership Institute March 14, 2017



Providence Health & Services

MISSION

As people of Providence, we reveal God's love for all, especially the poor and vulnerable, through our compassionate service.



St. Joseph Health

MISSION

To extend the healing ministry of Jesus in the tradition of the Sisters of St. Joseph of Orange by continually improving the health and quality of life of people in the communities we serve.

VALUES

- Respect
- Compassion
- Justice
- Excellence
- Stewardship

VISION

Simplify health for everyone

VALUES

- Dignity
- Service
- Excellence
- Justice

VISION

We bring people together to provide compassionate care, promote health improvement and create healthy communities.

 **50**
HOSPITALS

 **829**
CLINICS

 **23K**
PHYSICIANS

 **14**
SUPPORTIVE
HOUSING
FACILITIES

 **106K**
CAREGIVERS

 **1.9m**
COVERED LIVES

 **90**
NON-ACUTE
SERVICES

 HIGH SCHOOL,
NURSING
SCHOOLS
AND UNIVERSITY

 **2**
HEALTH
PLANS

 **21b**
REVENUE

 **23m**
ADMITS/VISITS

 **\$1.3b**
COMMUNITY
BENEFIT

'22
DESTINATION

CHARTING THE COURSE FOR
OUR NEW MINISTRY

 Providence
St. Joseph Health

A tremendous need...

1 in 5 adults in America experiences a mental illness

Depression is the **leading cause of disability** worldwide.

About **10.2 million adults** have co-occurring mental health and addiction disorders.

26% of homeless adults live with serious mental illness.

60% of adults with mental illness did not receive mental services in the past year.



22 veterans commit suicide each day.

90% of those who die by suicide have an **underlying mental illness**.

50% of all chronic mental illness begins by the **age of 14**.

57% of adults without mental illness symptoms believe people are caring and sympathetic to it. **Only 25% of adults with mental illness agree.**

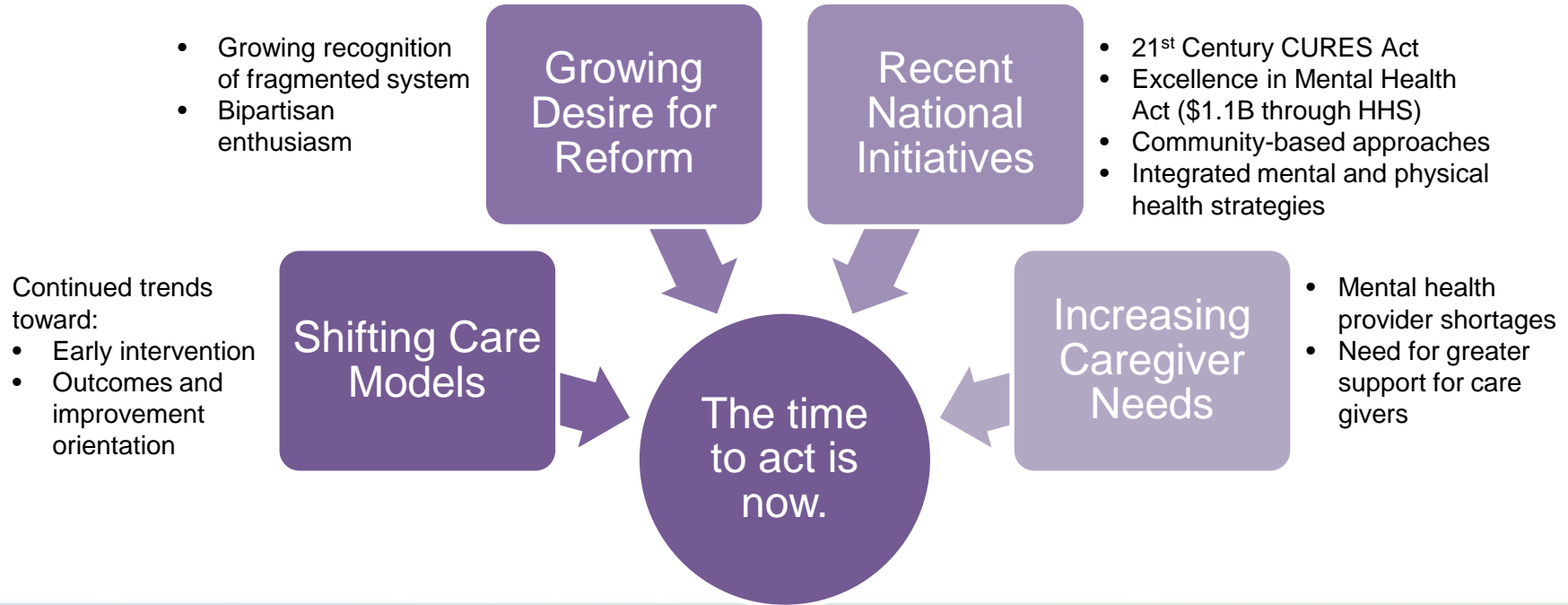
Complex, nation-wide challenges...

Community voices:

The most critical mental health concerns identified by recent data collection activity include the following:

- Access challenges
- Stigma
- Mental and physical care lack integration
- Inadequate children's services and community partnerships
- The need for new treatments and prevention strategies

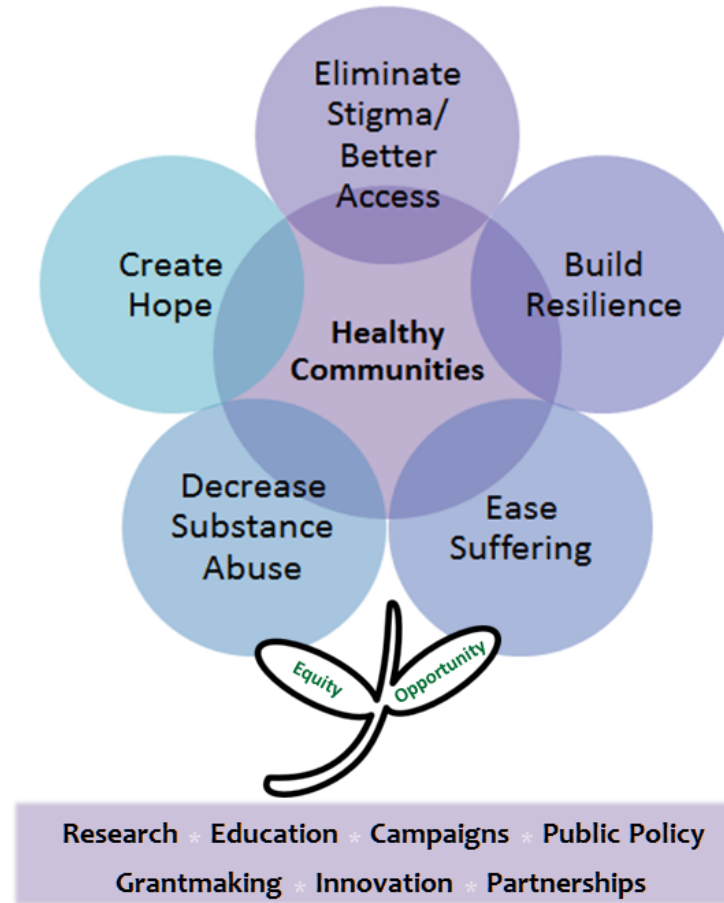
And a tremendous opportunity



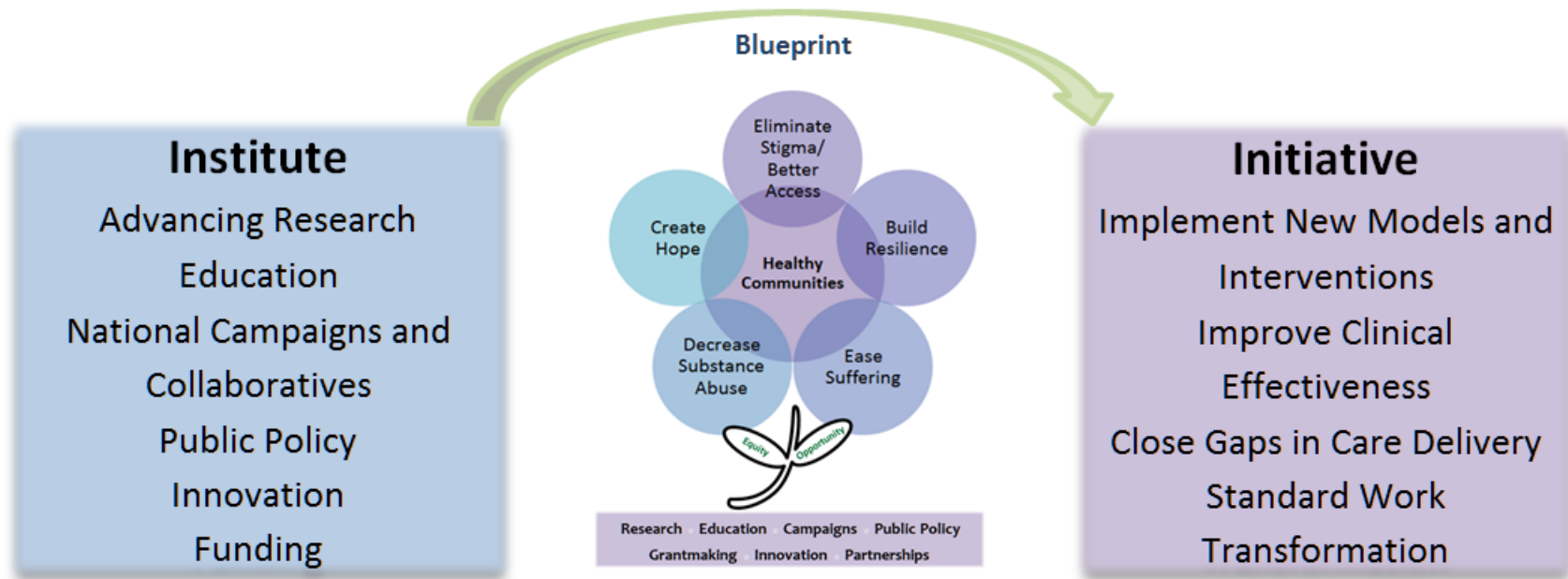
Opportunity



Strategic Foci



Strategic Alignment



Bigger than any one organization

There is a need to engage disparate groups and make broader connections across communities to address the opportunity at hand



Healthy Communities

Facilitate social connectedness, equity and community engagement

- Invest in the determinants of mental and emotional well being, resilience, and flourishing
- Take a lifespan approach from healthy beginnings to a dignified end of life
- Rooted in community aspirations, assets, and accountability
- It starts with each of us, where we live, learn, work, play and worship



Summary

- Mental health and wellness must be addressed holistically across our nation, and the time to act is now
- We lead from where we serve, and
- It takes a village. The IMHW is helping build the “lights on” infrastructure.